

Registration Form

Name _____
 Age _____ Rating _____ Phone _____
 Address _____
 City _____ State _____ Zip _____
 USCF ID# _____ Exp _____
 E-Mail _____

Overnight	July 6 - 11 <i>15 meals</i>	\$750	<input type="checkbox"/>
Commuter	July 7 - 11 <i>10 meals</i>	\$600	<input type="checkbox"/>
Day Camp w/ Lunch	July 7 - 11 <i>5 meals</i>	\$385	<input type="checkbox"/>
Day Camp	July 7 - 11	\$350	<input type="checkbox"/>
Tournament Lodging w/ Meals Includes Entry Fee	July 11 - 13 <i>3 meals</i>	\$115	<input type="checkbox"/>
Elite Group Placement >1500 rated students: contact us.		\$200	<input type="checkbox"/>
Linen Package		\$20	<input type="checkbox"/>
Tournament (July 12) Entry Fee		\$35	<input type="checkbox"/>

TOTAL ENCLOSED: \$ _____

NOTICE! There will be a medical form that will be sent to Camp Registrants and will need to be filled and returned for ALL Campers under 18 years of age. Completed forms will need to be returned by June 15th.
 Make checks payable to "Kopec Chess Services" and return form to:

Kopec's Chess Camp
 131 Marion Ave.
 Merrick, NY 11566

Register online at www.kopecchess.com
 Contact (516)-782-5285 drk2501@aol.com

Kopec's Chess Camp
 131 Marion Ave.
 Merrick, NY 11566

Deadlines and Discounts

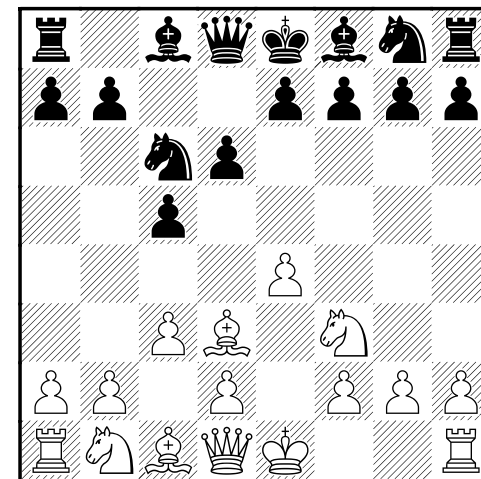
Registration Fees paid in Full by April 15th will receive a 10% discount (e.g. Overnight, Commuter, and Day Camp). Alternatively, you can send 50% of fees by April 15th, with Balance due by June 15th. There will be no refunds after June 15th.

Tournament

Kopec's First New Hampton School Open
 Saturday, July 12th

- 4 Rounds, G/60 d5, USCF rated
- See May - July *Chess Life* for Details
- \$35 Entry Fee
- Campers can stay two extra nights at the School (July 11, 12) plus enjoy 3 extra meals (Dinner July 11, Breakfast / Lunch July 12) including Entry Fee for \$115.

Kopec's Chess Camp



2014

The New Hampton School
 New Hampton, NH
 July 6th - July 11th



About the Camp

CHESS is the greatest game by mankind, for mankind. It can be played, enjoyed and studied by people of all ages and levels. It also develops analytical and problem-solving skills, which are invaluable for numerous other aspects of life.

You must attain certain knowledge and skills to improve at chess. To play chess well you cannot be a “dabbler”. Dedication and perseverance are required. For players ready to make the necessary commitment, KOPEC'S CHESS CAMP offers a *well-balanced program*, featuring intense chess instruction and competition, complemented by recreational activities, in an ideal setting.

**“First Rate Instruction in a
First Rate Setting”**

Camp Highlights

- For all ages, 7 to adult!
- Superb facilities in beautiful settings
- Experienced, internationally renowned instructional staff
- Diverse commuter and boarding programs
- Tennis instruction available daily! Other sports (baseball, basketball, soccer, swimming etc.)
- Seventeen years of operation
- Testing, Evaluation, Competition and Fun



The New Hampton School

Established in 1812, this lovely New Hampshire private school with a picturesque campus has earned a growing international reputation. The school houses 300 national and international students who aspire to elite colleges. It is rich with facilities including 9 tennis courts, many new buildings for academic and lodging purposes, & modern gym facilities. We will have numerous classroom options.



Meals will be provided by the School's own dining services. New Hampton is right in the middle of New Hampshire's breathtaking countryside, not far from the White Mountains, about 2¼ hours from Boston, and only 10 miles from Meredith, gateway to the magnificent Lake Winnepesaukee.

Overnight & Commuter

July 6th – July 11th

Five days and five nights beginning with check-in on Sunday, July 6th, and ending after lunch on Friday, July 11th. The instructors will include IM Dr. Danny Kopec, along with a number of other counselors. Adults will stay in a separate house (in single rooms) while youths under 17 will typically be in double rooms.

The Full Day Commuter Program will run July 7th to July 11th, from 9:00 AM to 9:00 PM, ending Friday, July 11th at 3:30 PM. Full day commuters receive lunch and dinner but not breakfast.

Day Camp

July 7th – July 11th

The Day Camp will run **Monday, July 7th – Friday, July 11th from 9:00 AM to 3:30 PM.** The program will be run by Morgan Murray-Miller and Danny Kopec, with possible assistance from others. There will be daily tennis instruction along with at least one other sport from 2:30 to 3:30 PM. Day campers can choose to have lunch all five days at the campus's excellent cafeteria or can save \$35 by bringing their own lunch.

About the Instructors

Dr. Danny Kopec, Camp Director
International Master

Camp Director Dr. Danny Kopec is the winner of numerous national and international titles over the past 35 years, author of many articles on chess and computer chess, 7 books on chess, and 8 highly acclaimed instructional chess DVDs. During the school year, Dr. Kopec is a Professor at the Department of Computer and Information Sciences at Brooklyn College. His love of the game has been transferred to numerous successful students including attendees of his camp which he has run for 17 years.

Gennady Sagalchik, Grandmaster on Staff
International Grandmaster

A graduate of the highly selective Botvinnik School and a three-time national intercollegiate champion, GM Sagalchik has coached numerous players to national and state scholastic titles. He has served as head coach of the Junior and Youth World Championships, the Long Island ChessMates, and the Stuyvesant HS Team. He is also head coach for the 64 Squares Academy, an advanced training program on track to become one of the most successful in the country.

Elite Group Placement

A special program for high rated players featuring Grandmaster instruction. Contact 516-782-5285 to discuss whether the program would be a good fit.